

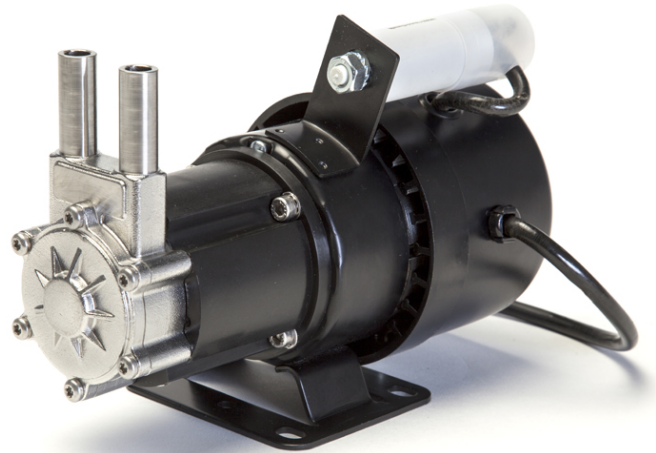
The HTP is a unique range of high head / low flow regenerative turbine pumps, with applications across many industries.

Manufactured from polyphenylene sulphide HTP pumps are robust and capable of pumping a wide range of liquids.

The HTP is based around optimised pump chamber engineered to produce extremely low friction losses and a high flow to power ratio.

When fitted with encapsulated impeller magnets a wide range of acid, alkaline and solvent liquids can be pumped.

Due to the use of PPS and the use of rare earth drive magnets, HTP pumps can be configured to pump high temperature liquids.



HTP magnetic drive turbine pumps add to sealer range advantage magnetic coupling:

- longer service life
- no mechanical seals
- totally sealed
- low maintenance
- less power consumption
- smooth operation

**Materials:**

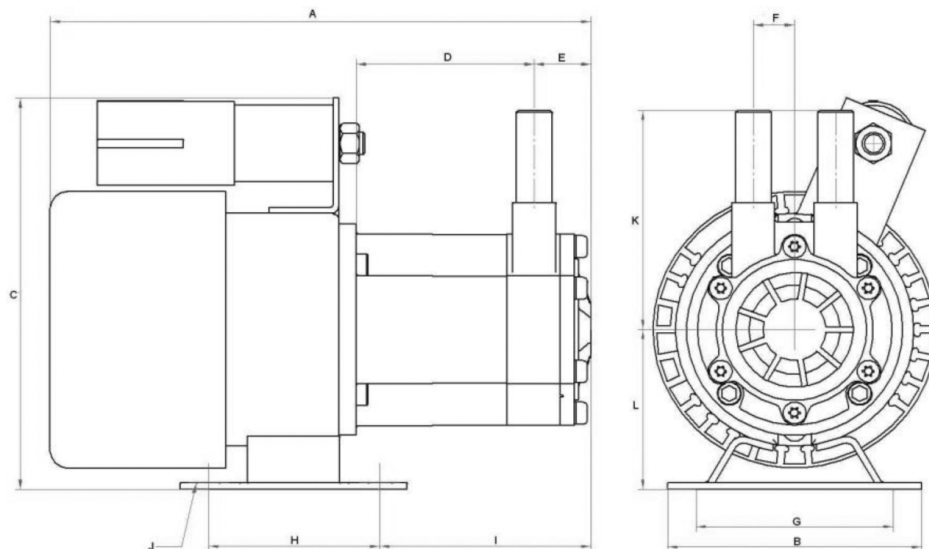
- **Pump housing** STAINLESS STEEL
- **Impeller** STAINLESS STEEL
- **Spindle** STAINLESS STEEL
- **Thrust washer** CERAMIC
- **O ring** NITRILE / EPDM / VITON / PTFE

- **Max temperature:** 100 °C
- **Max system pressure:** 300 psi

**Technical information**

Motor Data	Code	Frame	Mounting	IP	Phase	50 Hz			60 Hz			Approvals	Total kg
						rpm	Kw	Amps	rpm	Kw	Amps		
50 Hz SP 230V	ABIP6898K	56	B34	0	1	2900	0.03	0.65	-	-	-	CE	1.7

**Dimensions**



Dimensions	A	B	C	D	E	F	G	H	I	J	K	L	Inlet	Outlet
all dimensions in mm	191.00	89.00	140.00	68.00	20.00	14.50	67.50	60.20	74.00	11.00	79.00	56.00	1/2"	1/2"

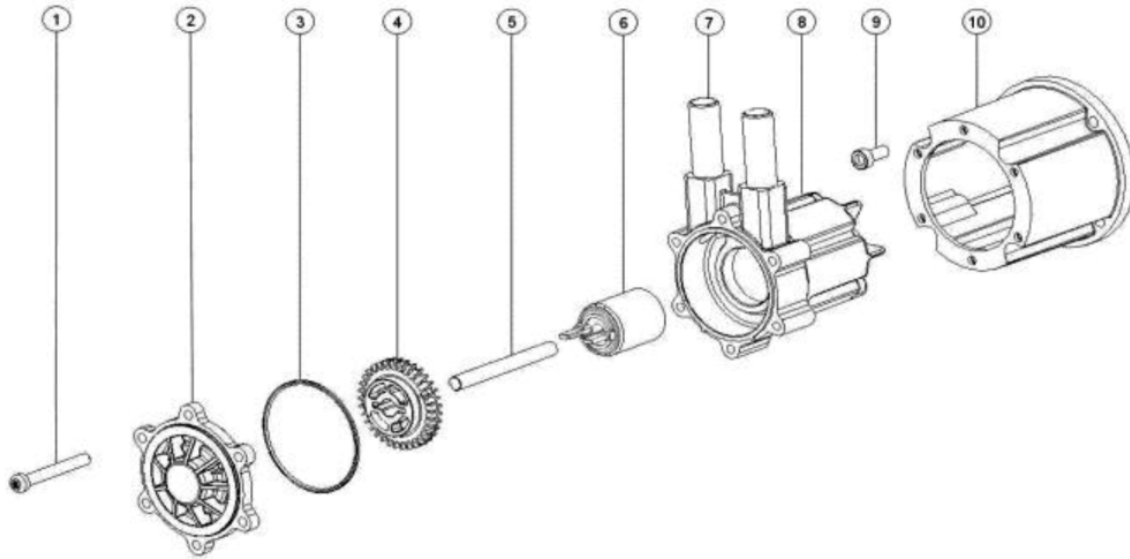


www.teoremasrl.com

# MAGNETIC DRIVE TURBINE HTP-SS series

GENERAL DESCRIPTION

## Technical information

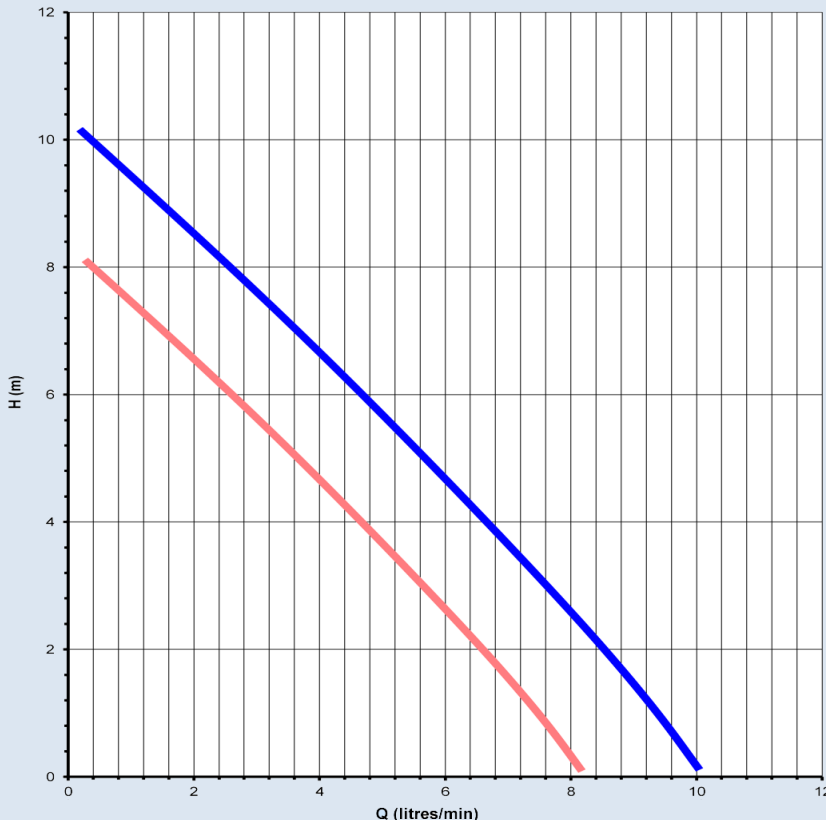


Item	Description	Qty	Code	Item	Description	Qty	Code
1	HOUSING SCREW ST/ST	4	5002-120-30	6	IMPELLER MAGNET	1	5025-100-51
2	FRONT COVER PPS	1	5022-2101-50	7	PUMP HOUSING PPS	1	5025-141-09
3	O RING NITRILE	1	5002-120-30	8	DRIVE MAGNET	1	5025-201-00
4	TURBINE PPS	1	5025-131-14	9	BRACKET FIXING SCREW	1	5025-170-01
5	SPINDLE ST/ST	1	5025-191-08	10	MOTOR BRACKET	1	5090-512-50CAP

2

MAGNETIC DRIVE TURBINE  
HTP-SS series

## Performance Curves



50 Hz 2900 rpm    60 Hz 3400 rpm    Tests obtained with water 1.0 SG

PERFORMANCE CURVES

MAGNETIC DRIVE TURBINE  
HTP-SS series

