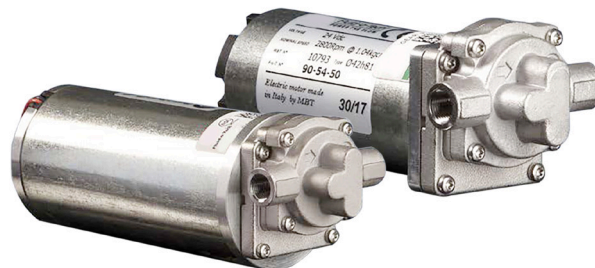


The Fluid-o-Tech® DGD PRO direct drive gear pump has an AISI 316L stainless steel housing and Peek gears. The ports are 1/8" GAS in line. Designed to extend the performance of the DGD series pumps in both flow rate and pressure, the DGD PRO pump-motor unit is built to handle food grade liquids in compliance with the most stringent standards.

The DGD PRO delivers great performances in a small footprint and it is available with brush drives to cover the widest range of applications and requirements.



### MAIN APPLICATIONS

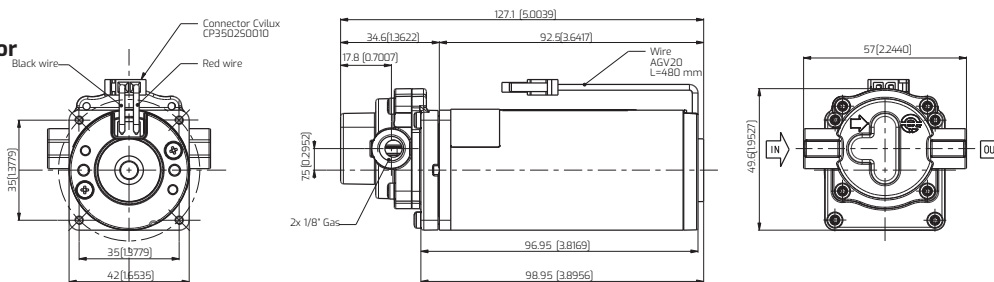
- Food equipment
- Water treatment
- Lubrication
- Sanitization
- Fluid transfer

### TECHNICAL INFORMATION

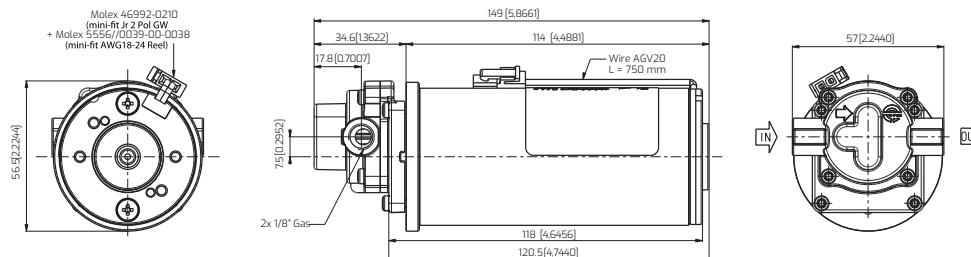
Pump housing material	AISI 316L AISI 316L Peek	Nominal speed	2800 rpm	1700 rpm
Gears and bushing material	1/8" GAS	Max output power	50W	22 W
Ports	10 bar/145 psi 24 V Brush	Motor IP protection	IP 30	IP 30
Max static pressure	24 V Brush	Insulation class	B	B
Motor type	10 bar/145 psi	Unit weight	830 g/1.8 lb	1163 g/2.5 lb

### DIMENSIONS

**A**  
DGP with motor  
at 2800 RPM



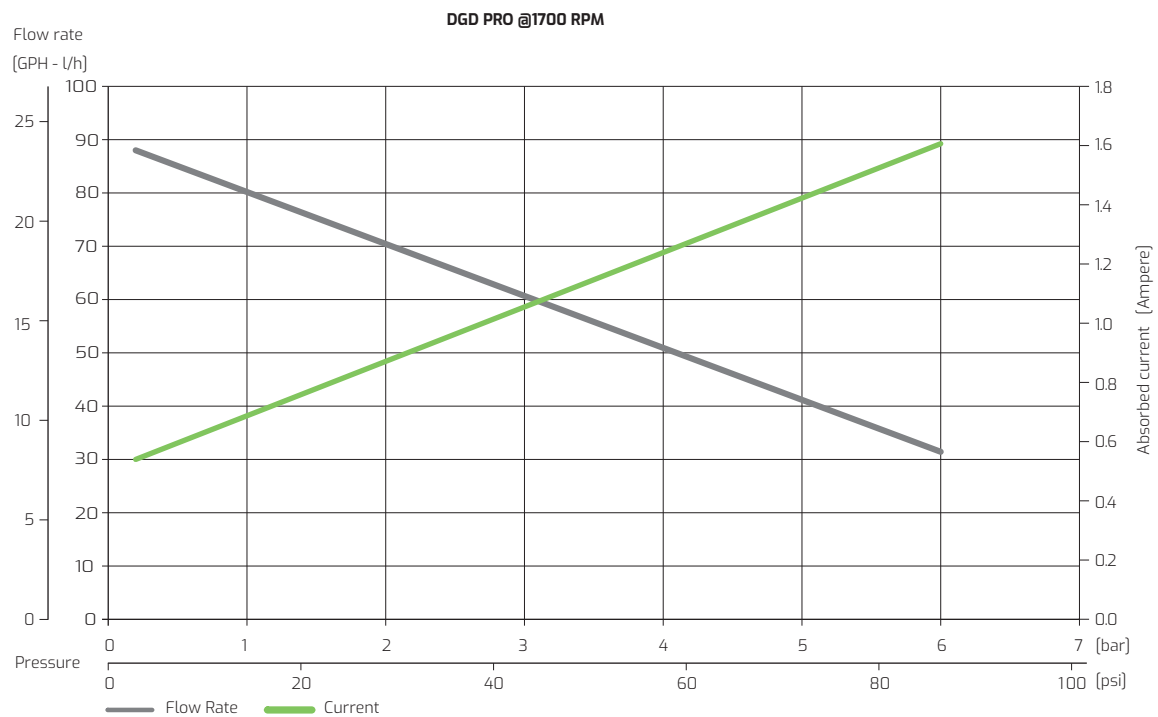
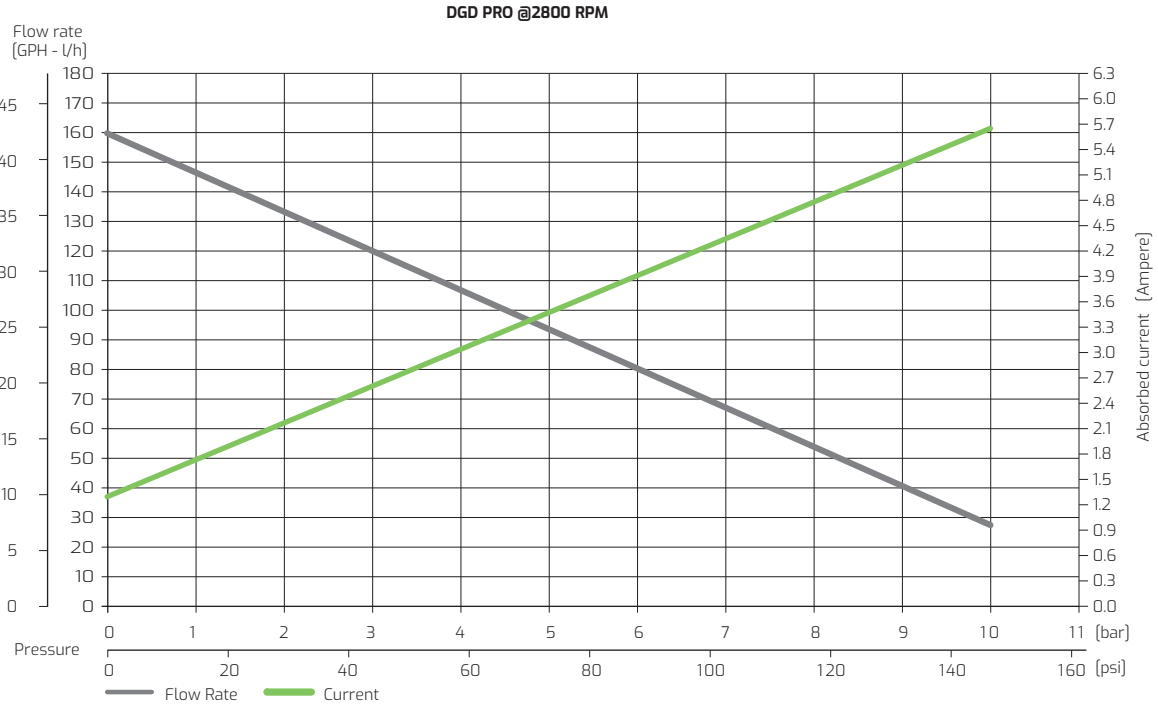
**B**  
DGP with motor  
at 1700 RPM



Dimensions in mm (inches)



**PERFORMANCE CURVES**



Note: Characteristics with water at 20 °C (68 F) and without relief valve. Fluids different from water must be validated by the Customer. Temperature requirements different from ambient temperature must be mentioned on the order. Use a filter before the pump inlet no larger than 10 micron. Fluid-o-Tech reserves the right to alter the specifications indicated in this catalogue at any time and without prior notice.

