

The DGM09 series magnet drive gear pumps derive from the well established mag drive MG200 series.

Built to handle clean water and relatively viscous fluids at low pressure, the DGM09 series pump-motor unit has low pulsation and is capable of handling fluids at a maximum temperature of 95 °C (203 F). The pump housing and the gears are made of Vectra.

Seals are available in NBR, EPDM or VITON®. The seal less design is guarantee of reliability. Suction/discharge ports are 8 mm barbed end.

• Motor: 12-24 V DC, 3000 rpm, brush type



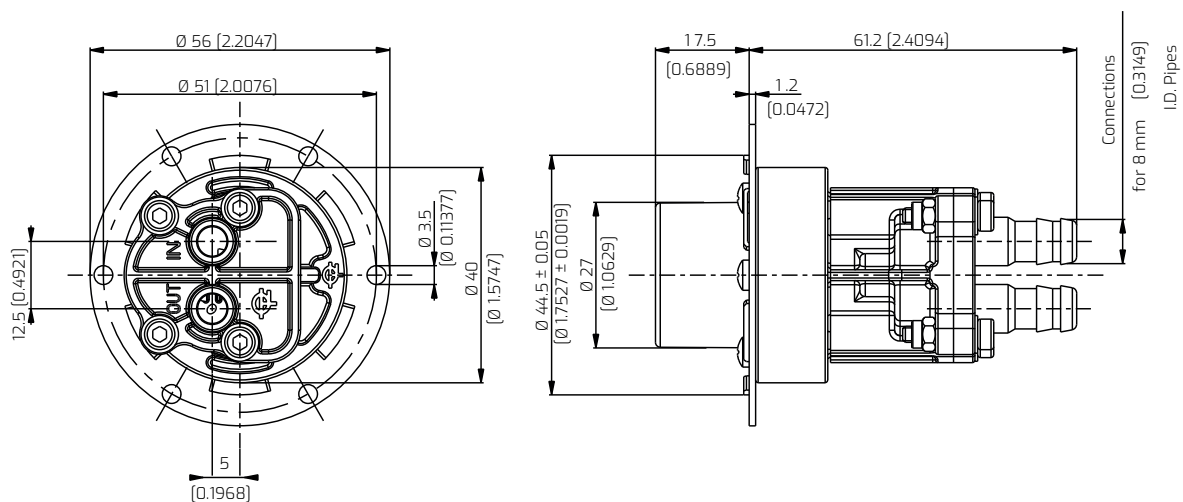
MAIN APPLICATIONS

- Water purification
- Laser cooling
- Spraying
- Water recirculation
- Condensation removal
- Low pressure carbonation
- Sanitization

TECHNICAL INFORMATION

Position	1	2	3	4	Customiz	1	Pump series	DGM = magnet drive
Code	DGM	O9	E	M01	0000	2	Gears width thickness	O9 = 9 mm
						3	Elastic material	E = EPDM N = NBR V = VITON®
						4	Motor	000 = none M01 = 3000 rpm/24V M03 = 3000 rpm/12V

DIMENSIONS



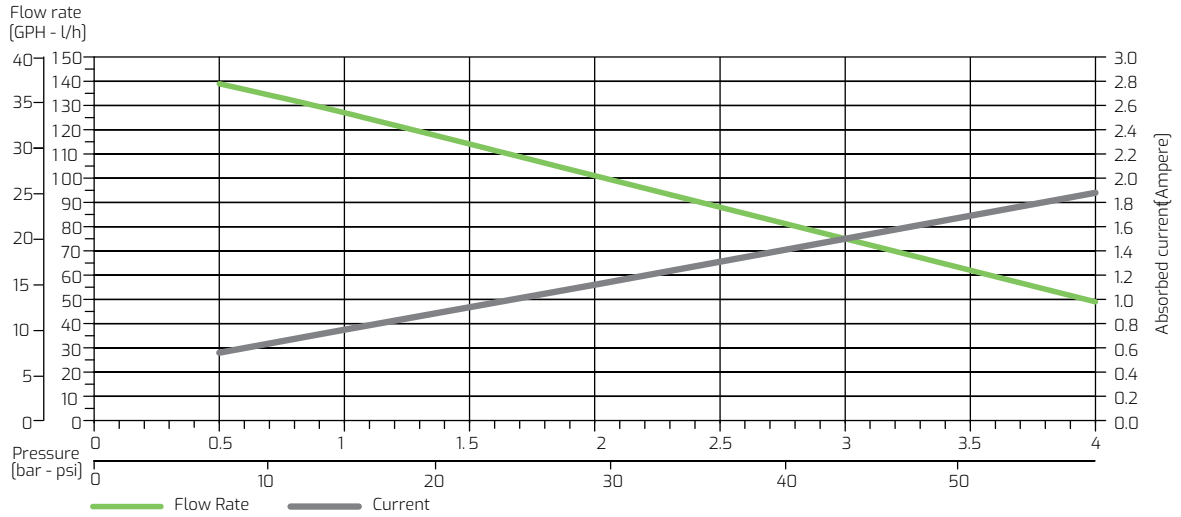
* Dimensions without motor and adapter

Dimensions in mm (inches)



PERFORMANCE CURVES

DGM09 @ 3000 rpm



Note: Characteristics with water at 20 °C (68 F) and without relief valve. Fluids different from water must be validated by the Customer.
Temperature requirements different from ambient temperature must be mentioned on the order.
Different materials are available upon request. Use a filter before the pump inlet no larger than 10 micron

