

The compact precision performance pumps MG series are designed to fit high technology applications. The magnet drive principle provides a totally sealed pump chamber which is capable of handling a wide range of corrosive fluids with a high degree of safety.

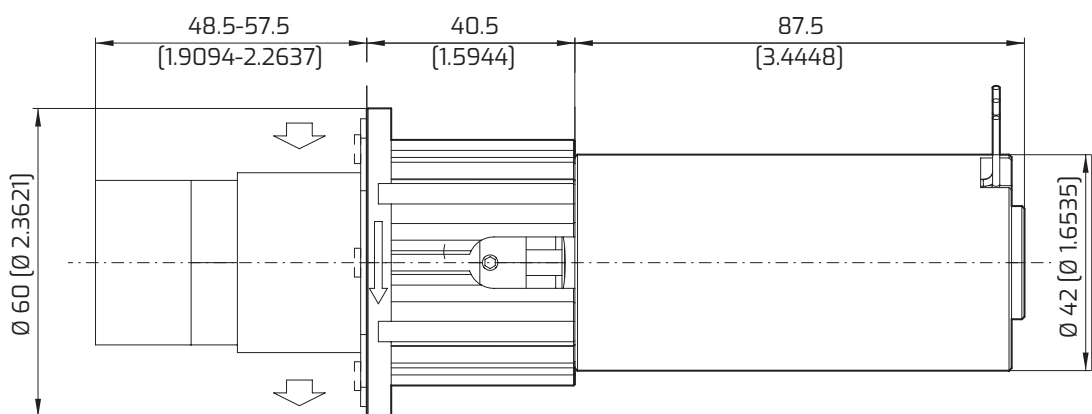
The pump housing is available in AISI 303, AISI 316L. In operation the MG series pumps are noiseless, pulsation-free and capable of handling relatively high temperature liquids up to 120 °C (248 F). The coupling with the AC motor unit designed for heavy duty, provides a reliable and noiseless operation in a compact size package.

The pole-to-pole alignment of the two magnets provides the driving motion to the pump. Decoupling will occur when the pump load exceeds the maximum coupling torque provided by the alignment of the two magnets.



MAIN APPLICATION

- Medical and surgical
- Hemodialysis apparatus
- Laser apparatus
- Lubrication
- Ink-jet printing systems
- Cooling systems
- Laboratory instrumentation
- Water treatment
- Sampling
- Food processing

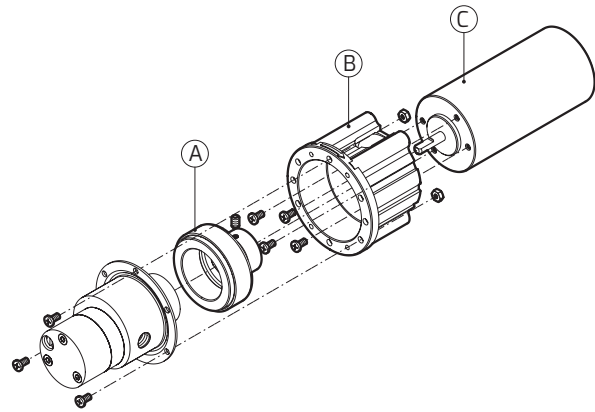


Dimensions in mm (inches)

Dimensions in mm (inches)

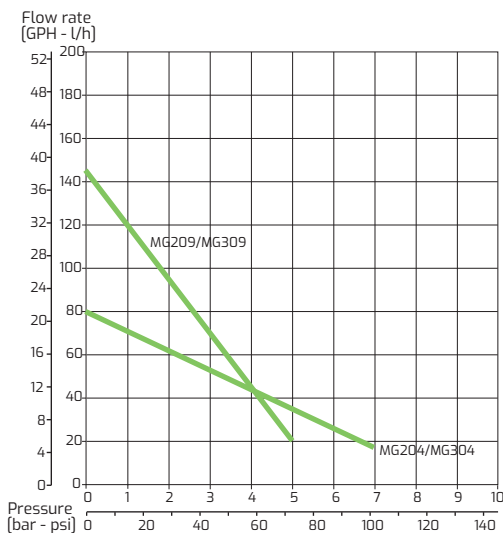


POS	DESCRIPTION	FEATURES	CODE
A	Driving magnet	For 5 mm bore	MGAFO55
A+B	Complete adapter	For KAG M42x30	MGBF42S
A+B+C	Complete motor assembly	See table below	MGCF04S MGCF11S

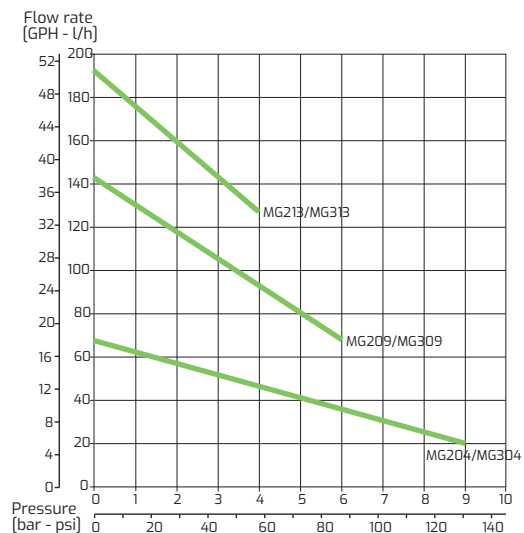


DRIVING UNIT	MGCF04S	MGCF11S
Voltage (V)	12 DC	24 DC
Rated speed (rpm)	3300	3400
Current consumption (A)	3.4	1.5
Output power (W)	25.9	23.6
Weight (g)	700	700

MGCF04S



MGCF11S



Note: Characteristics with water at 20 °C (68 F) and without relief valve. Fluids different from water must be validated by the Customer.
Temperature requirements different from ambient temperature must be mentioned on the order.
Different materials are available upon request. Use a filter before the pump inlet no larger than 10 micron

