

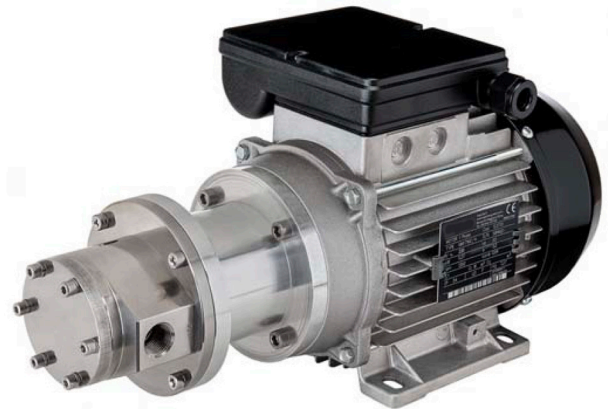
The MPO 2R magnetic drive rotary vane pumps range are ideally suited for low flow/high head applications.

MPO pumps feature selfcompensating sliding-vanes which maintain design head and flow capacities for extended operating life. MPO vane pumps are suitable for thin non-lubricating liquids and/or high differential pressure without rapid wear associated with gear mechanisms.

MPO pumps are capable of self-priming from a dry start.

The magnetic drive principle consists in an inner magnet connected to the rotor shaft and an outer magnet connected to the motor shaft. Synchronous alignment of the two magnets provides pump running. Decoupling occurs when the pump head exceeds the coupling torque of the magnet coupling.

The MPO series pumps offer multiple options to configure the product to the specific need of each Customer.



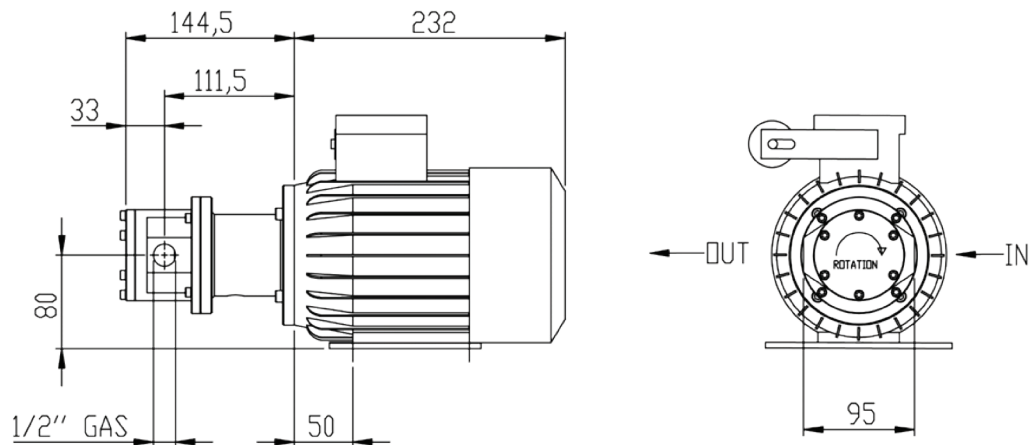
- longer service life
- no mechanical seals
- totally sealed body
- low maintenance
- less power consumption
- smooth transmission

TECHNICAL SPECIFICATION

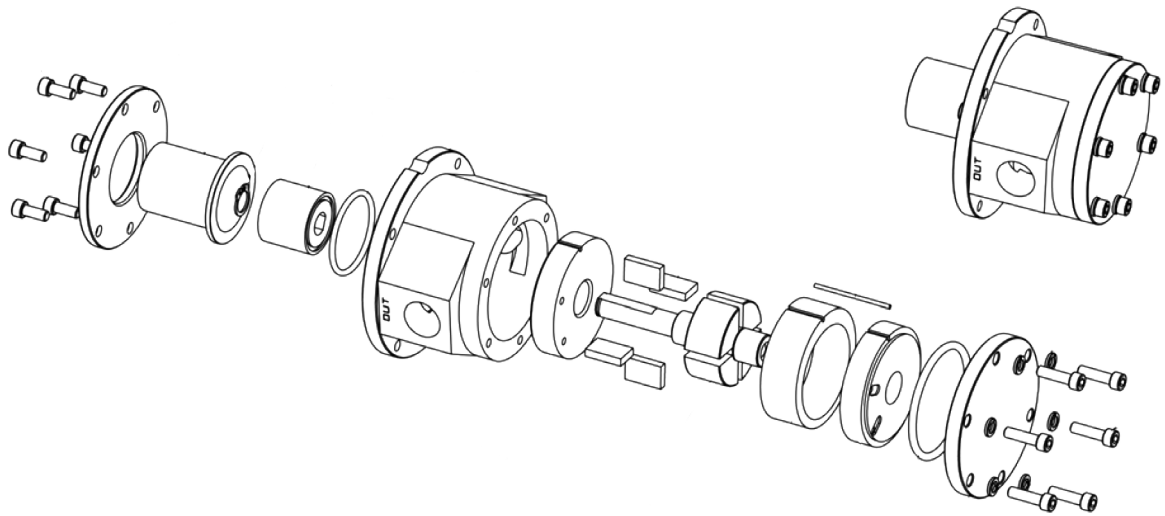
The housing is available in stainless steel or brass. The internal components include SS rotor shaft, carbon graphite pumping chamber and a O-ring in NBR , EPDM or Viton ®.

- 1/2" GAS or NPT threaded ports
- Max system pressure: 18 Bar (260 psi)
- Max speed: 2000 rpm
- Max temperature: 100 °C (212 °F)

DIMENSIONS

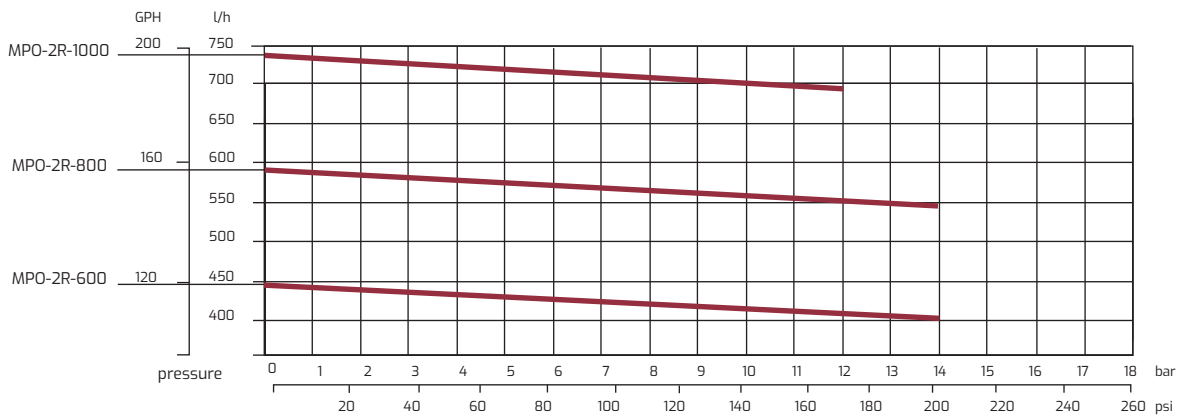


TECHNICAL INFORMATION

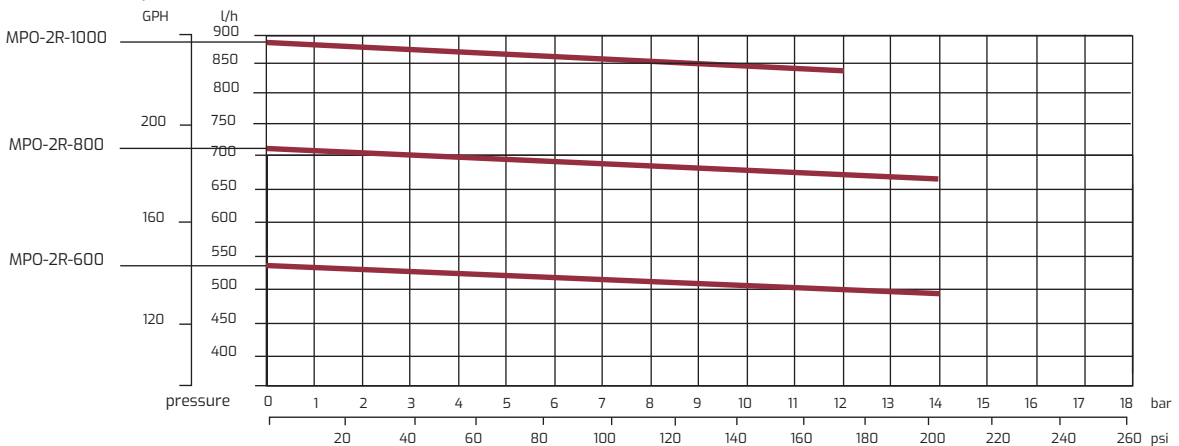


PERFORMANCE CURVES

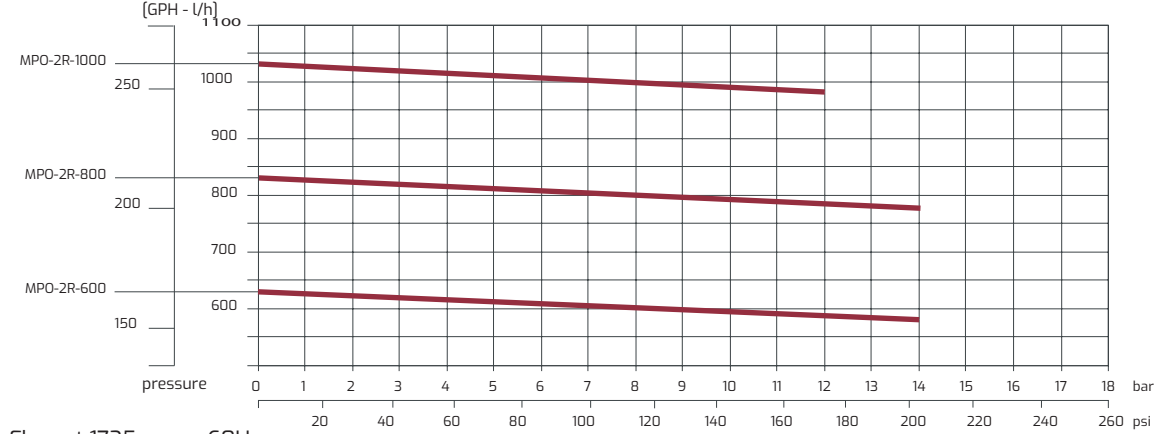
Flow at 960 rpm 50Hz



Flow at 1100 rpm 60Hz



Flow at 1400 rpm 50Hz



Flow at 1725 rpm 60Hz

