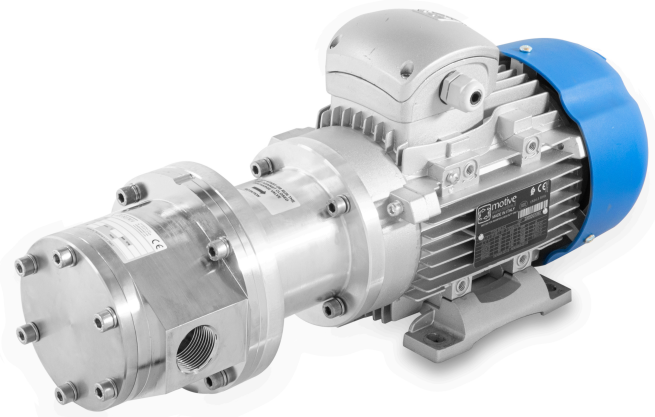


The **MPO 3R** series magnetic drive rotary vane pumps, available in 7 different displacements, are the largest pumps of the MPO series. The pump housing, the rotor and each metallic component are in stainless steel. The pumping chamber and the vanes are in high impact carbon graphite. The self-lubricating property of polished stainless steel and carbon graphite makes this pump well suited for thin non-lubricating liquids, water based liquids, where gear mechanism show rapid wear.

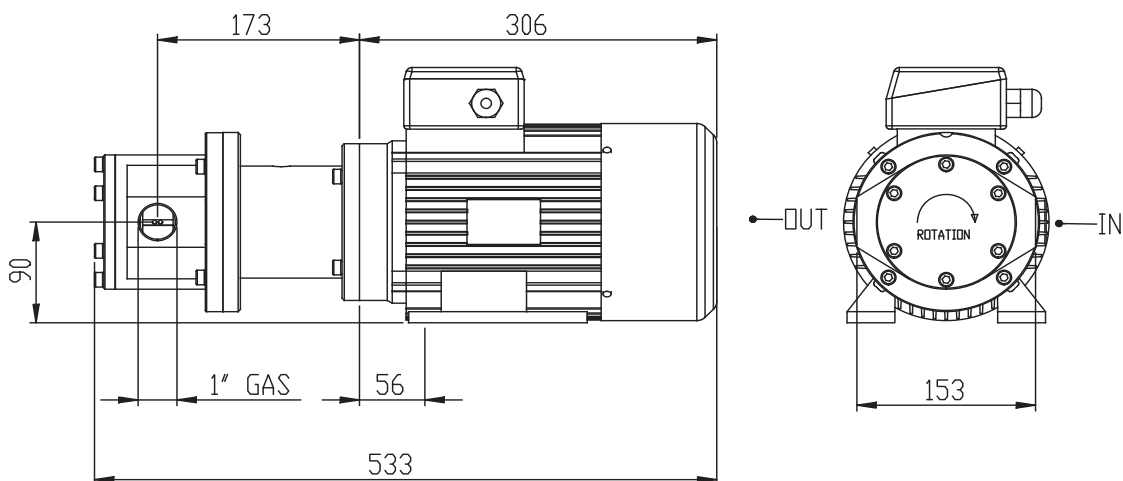
**MPO pumps are capable of self priming from a dry start.**



## TECHNICAL SPECIFICATION

- Inlet/outlet ports 1" NPT or BSP (GAS)
- Ideally for variable speed drives Replaceable carbon cartridges
- Low maintenance cost
- ATEX category IV 3 G2 D22
- Available with o-rings NBR, EPDM, FEP or VITON®
- Max. temperature: 150 °C (300 °F)
- Max. Viscosity 2000 cps
- Max. system pressure: 20 bar (300 psi)
- Safety or by-pass valves recommended

## DIMENSIONS



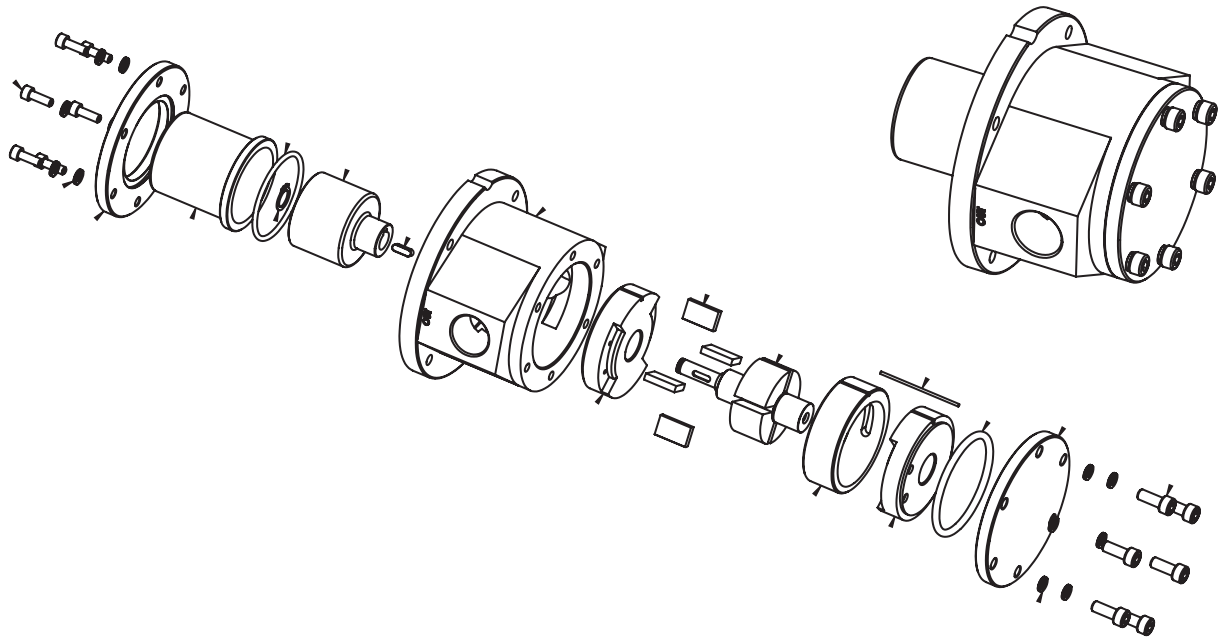
## MAIN APPLICATION

- Reverse osmosis systems
- Cooling systems
- Chemical plants
- Car wash
- Pharmaceutical plants
- Refrigeration and ammonia

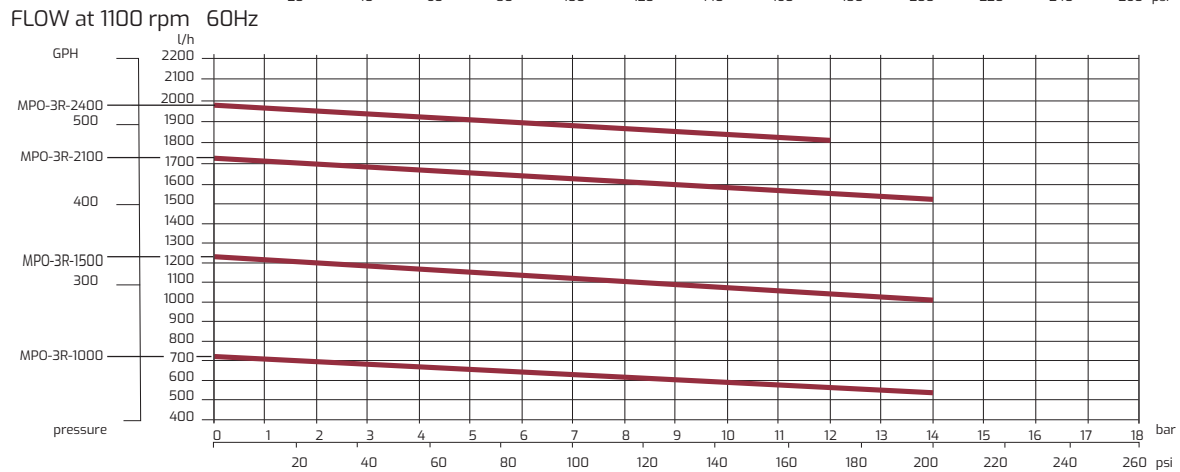
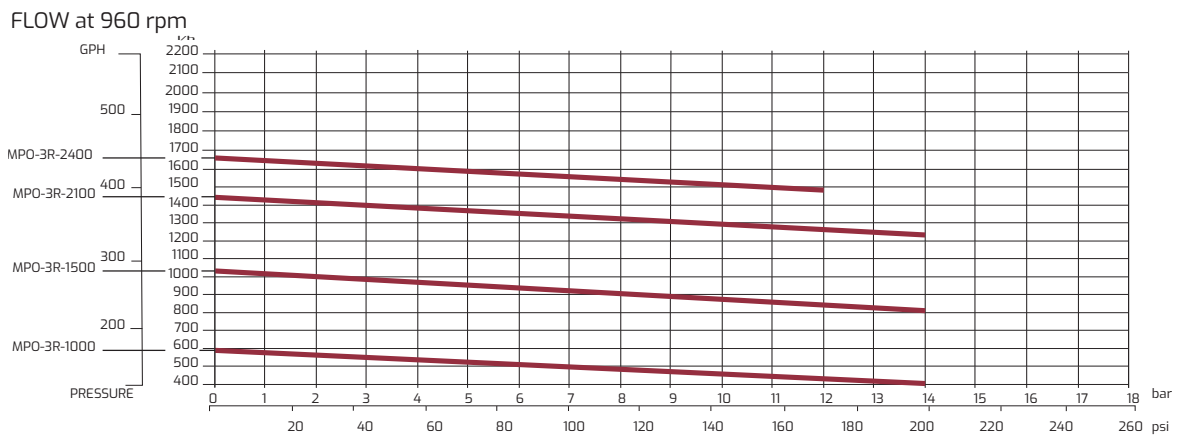
**TEOREMA SRL** Via Vittorio Veneto, 94/11 - 26010 Pianengo (CR)  
Tel. +39 0373 257429 Fax +39 0373 256231 P.IVA 012585300193  
e-mail: [info@teoremasrl.com](mailto:info@teoremasrl.com) Web : [www.teoremasrl.com](http://www.teoremasrl.com)



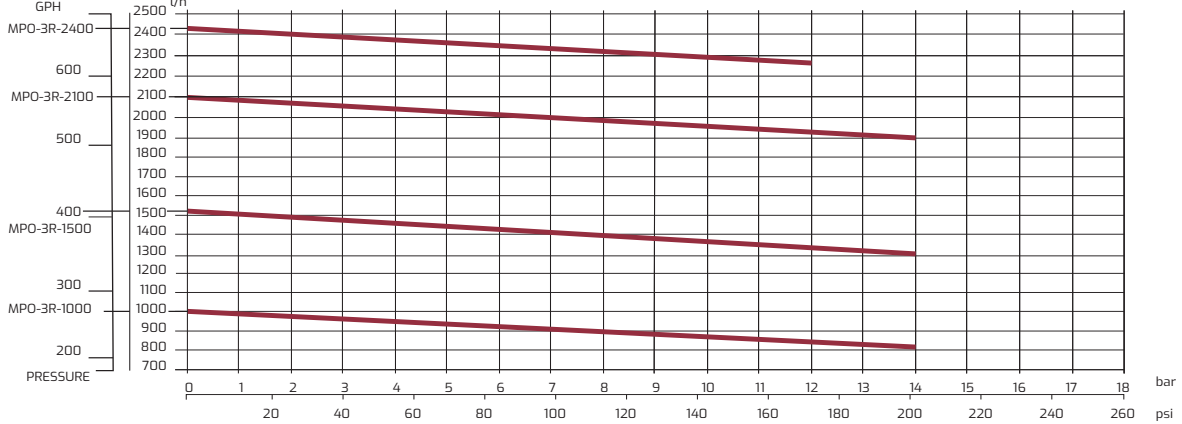
**TECHNICAL INFORMATION**



**PERFORMANCE CURVES**



FLOW at 1400 rpm



FLOW at 1725 rpm 60Hz

