

The 4000 series rotary vane pumps, available in 7 different displacements, are the largest Rotoflow® high technology volumetric pumps. The pump housing, the rotor and every metallic component are in AISI 303 stainless.

The pumping chamber and the vanes are in high impact carbon graphite. The self-lubricating property of polished stainless steel and carbon graphite makes this pump well suited for water and water based solutions.

Inlet/outlet ports are 1" NPT female threaded (1" GAS available upon request). All models are available with NBR or Viton® seals.

Maximum operative temperature: 70 °C (158 F)

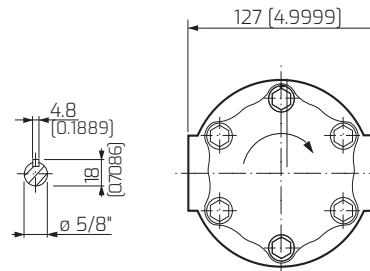
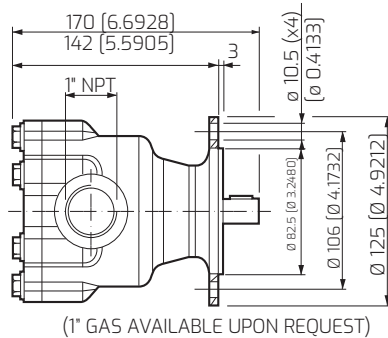
- Max. motor speed: 1725 rpm
- Max. system pressure: 20 bar (290 psi) (Safety valve recommended)



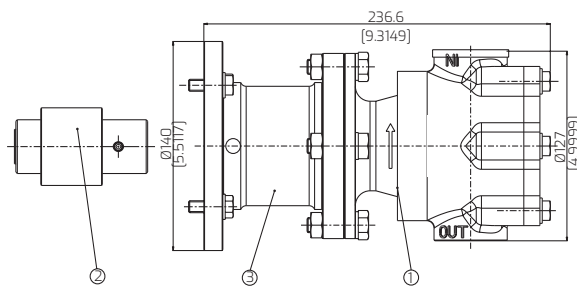
### MAIN APPLICATION

- Reverse osmosis
- Car wash
- Cooling systems
- Irrigation

### DIMENSIONS



Dimensions in mm [inches]



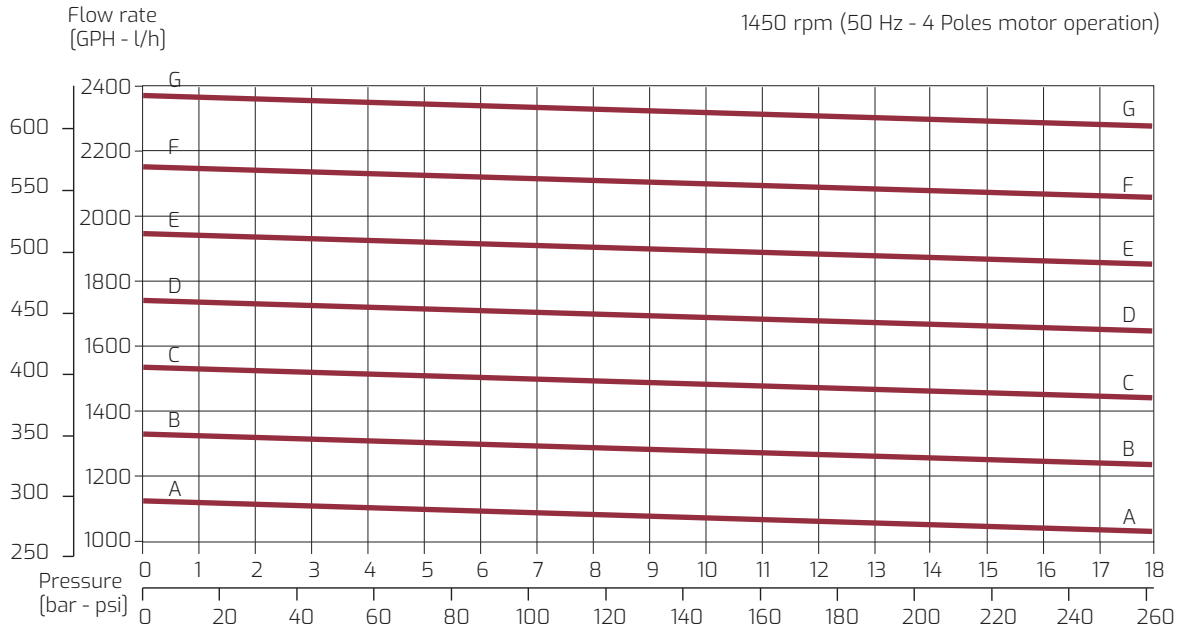
DIMENSIONS REFERS TO ADAPTER M90-B14

POS	DESCRIPTION	MATERIAL	CODE
1	Pump	Stainless Steel	-
	Coupling M90	Cast Iron	91-80-03
	Coupling Nema 56C		91-80-05
2	Coupling Nema 143TC-145TC	Aluminium	91-80-04
	Adapter M90 B14 with screws		92-81-02
3	Adapter Nema 56C with screws	Aluminium	211605
	Adapter Nema 143TC-145TC with screws		211605

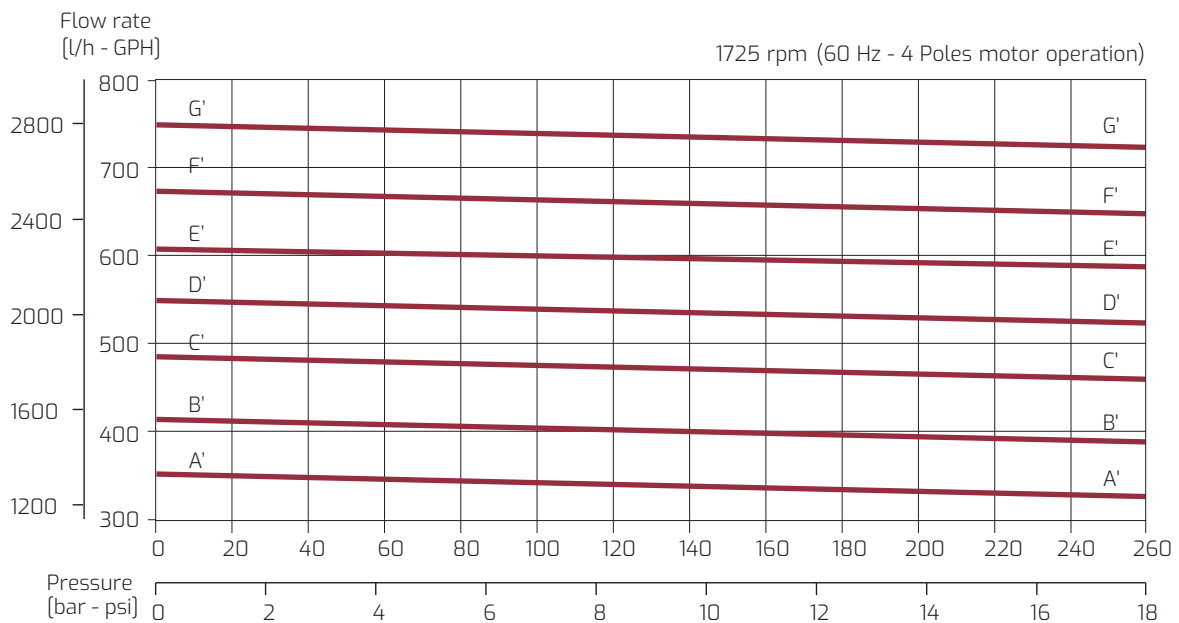


**PERFORMANCE CURVES**

PO MODEL	4010	4020	4040	4060	4080	4100	4120
Figure	A - A	B - B	C - C	D - D	E - E	F - F	G - G



PO MODEL	4010	4020	4040	4060	4080	4100	4120
Figure	A' - A'	B' - B'	C' - C'	D' - D'	E' - E'	F' - F'	G' - G'



Note: Characteristics at constant motor speed with water at 20 °C (68 F) - Figures of flow are averages - Pump weight 5.3 kg (11.6 Lb). For applications involving other fluids, high temperatures or unusual processing conditions, please consult the factory or an authorized Fluid-o-Tech distributor.

