

Magnetic drive rotary vane pumps add to sealed range advantage magnetic coupling:
The introduction of a new driving magnet with improved torque brings the maximum operating pressure to the same values of the PO series.
TM Series magnetic drive rotary vane pumps are housed in stainless steel or brass, with carbon graphite internal components.

- longer service life
- no mechanical seals
- totally sealed
- low maintenance
- less power consumption
- smooth operation



- longer service life
- no mechanical seals
- totally sealed body

- low maintenance
- less power consumption
- smooth transmission



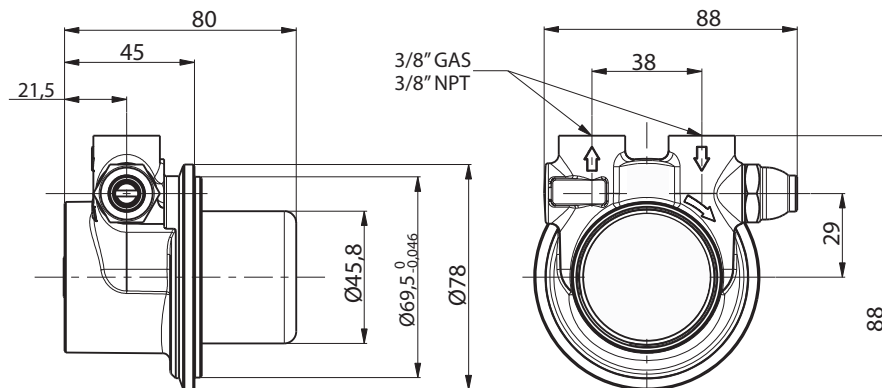
TECHNICAL SPECIFICATION

The housing is available in stainless steel or brass. The internal components include SS rotor shaft, carbon graphite pumping chamber and a O-ring in NBR , EPDM or Viton ®.

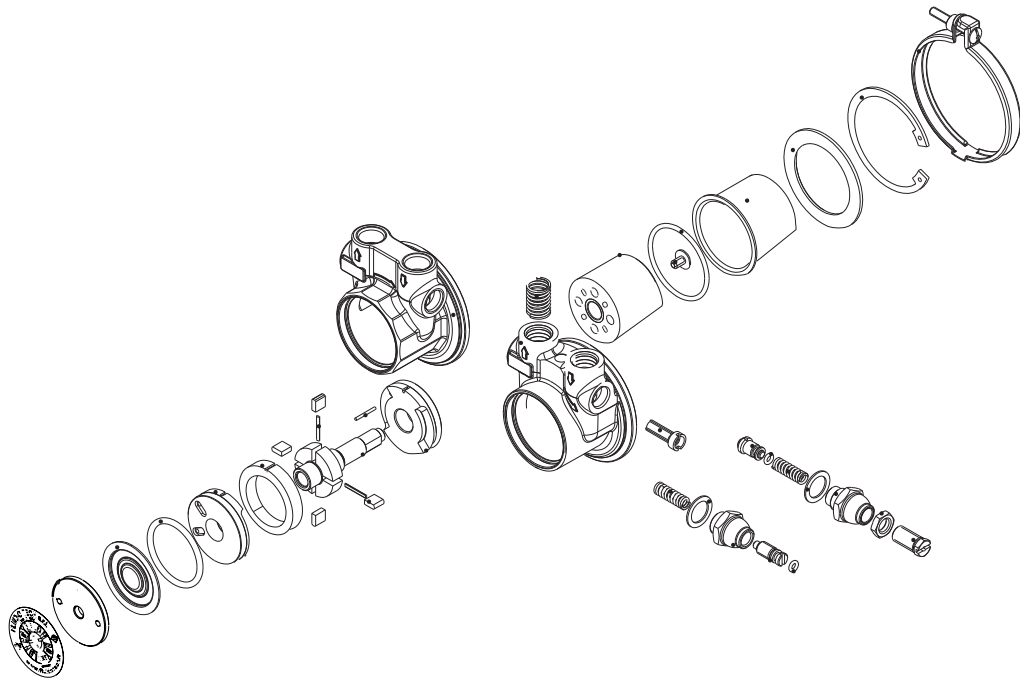
Available upon request:

- 3/8" GAS or NPT threaded ports
- standard or balanced relief valve
- NBR, EPDM or VITON o-ring
- NSF listed pumps for potable water
- Max system pressure: 18 Bar (260 psi)
- Max temperature: 70 °C (158 °F)

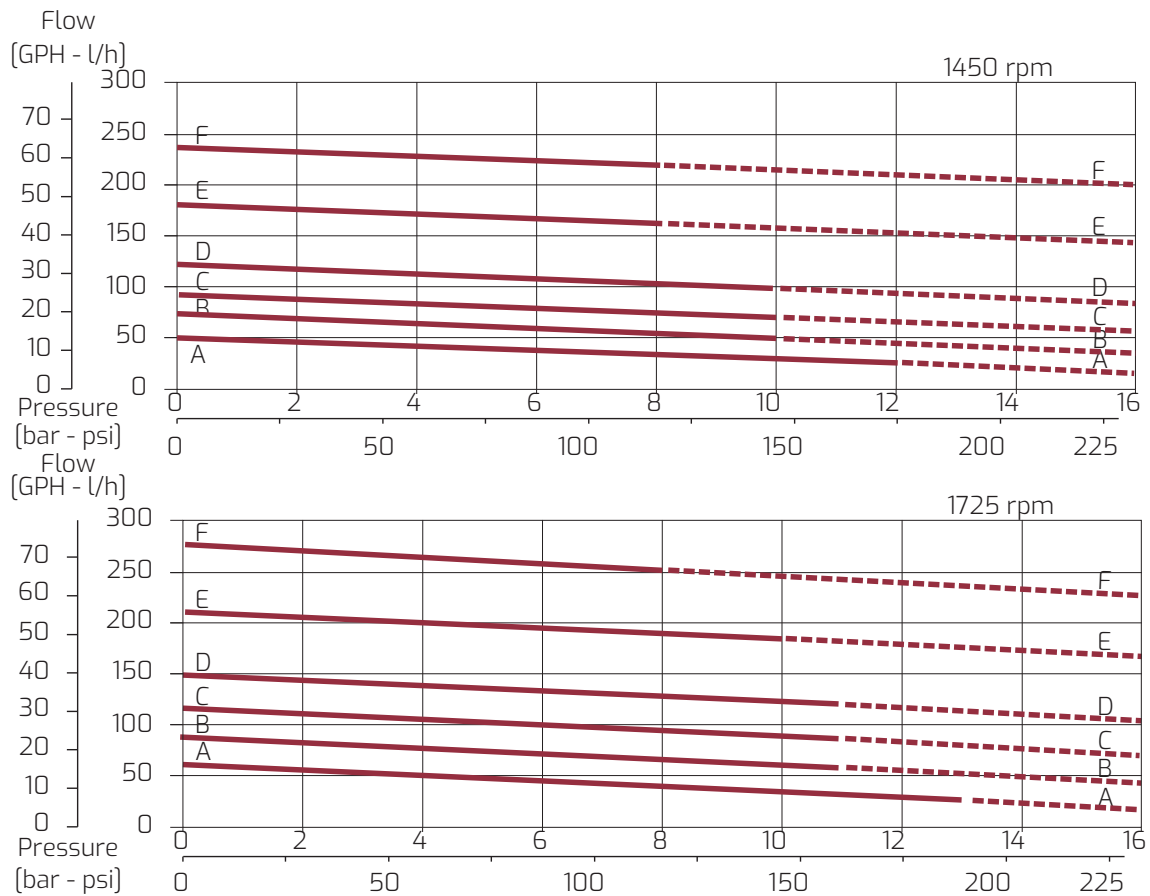
DIMENSIONS

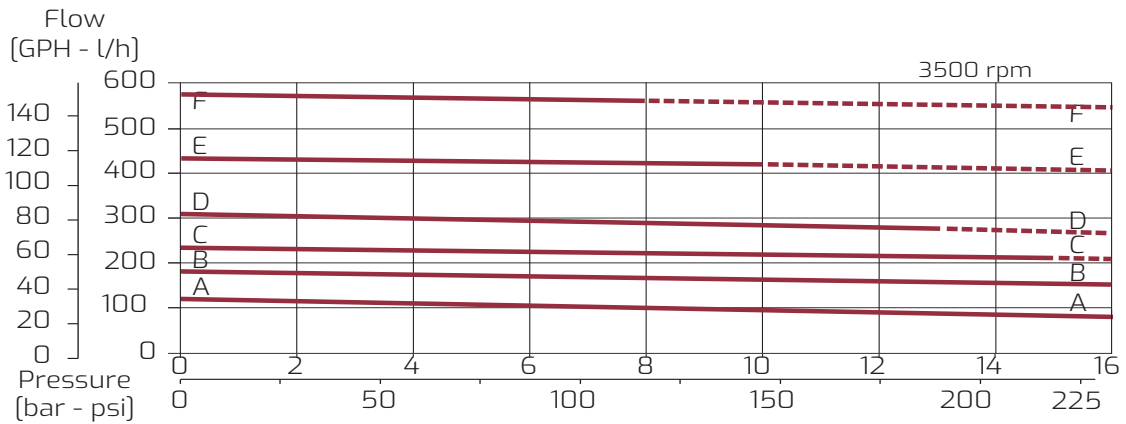
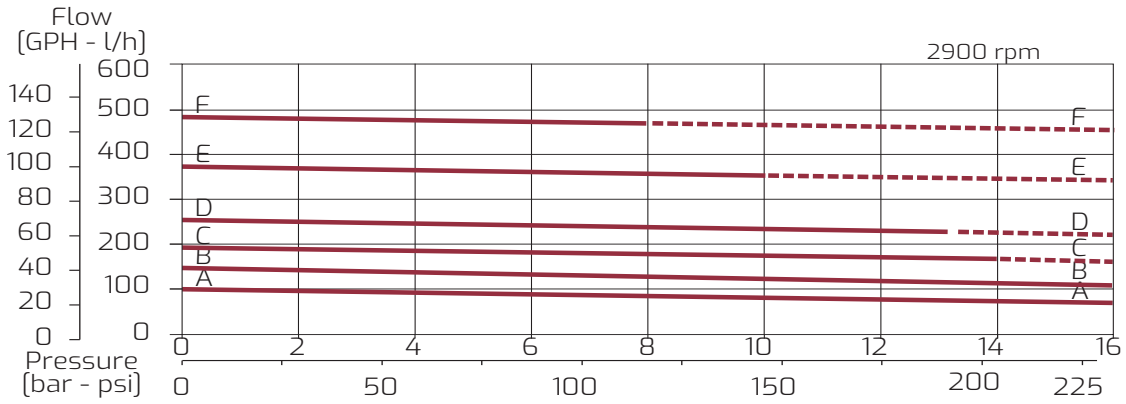


TECHNICAL INFORMATION



PERFORMANCE CURVES





- With high torque magnet
- With high standard magnet

Note: Hydraulic characteristics with water at 20 °C (68 F) and without bypass. Use filter before pump inlet not larger than 10 microns.
For applications involving other fluids, high temperatures, unusual processing conditions or speed higher than 2500 rpm consult the factory or an authorized distributor.

