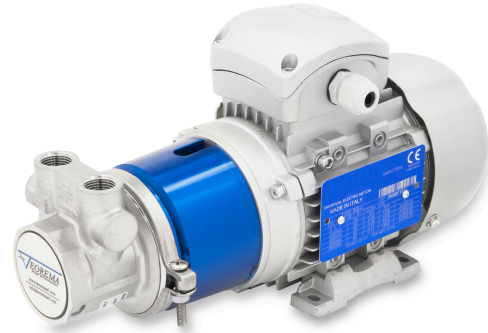


The **TM 300-400 series** pumps have been designed to deliver a smooth flow reliably for a long time. The precise alignment of pump and motor, combined with the absence of contact between them granted by the magnetic drive, optimizes the operation of the unit reducing friction and therefore wear, noise and power consumption. The absence of dynamic seals in favour of static o-rings improves the reliability of the pump and at the same time of the motor driving it. The pump, with stainless steel housing and rotor, carbon graphite pumping chamber and NBR seals, is NSF certified for use in contact with potable water.



MAIN APPLICATION

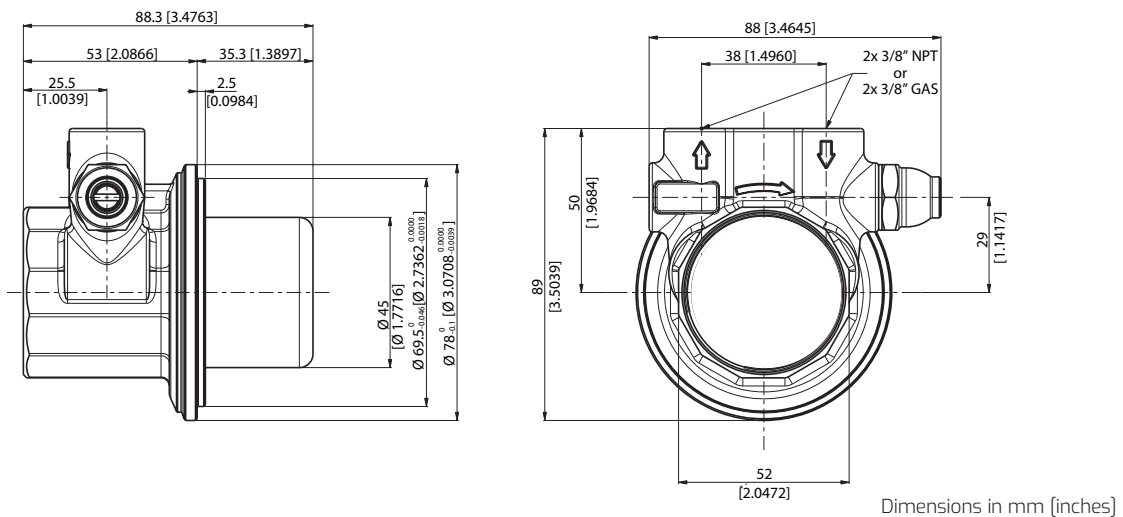
- Cooling systems
- Booster systems
- Water treatment
- Solar systems



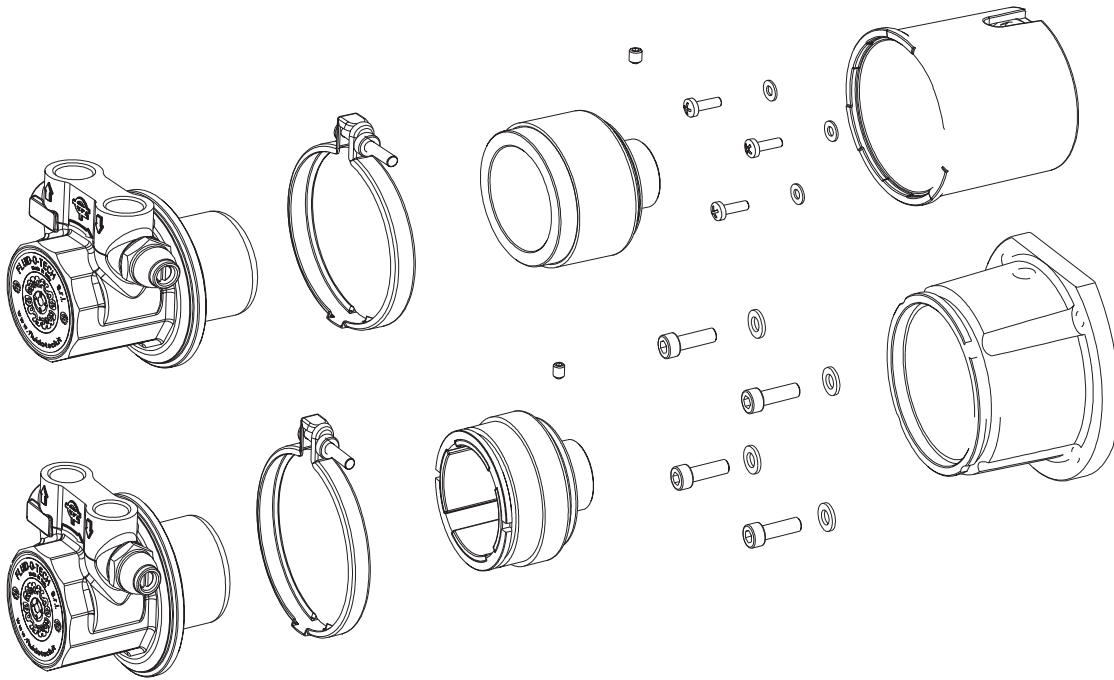
TECHNICAL SPECIFICATION

Pump housing material	Stainless steel	Speed limit	1725 rpm
Pumping chamber	Carbon graphite	Max static pressure	20 bar/290 psi
Ports	3/8" GAS or NPT	Pump weight	1.0 kg (2.2 lb)

DIMENSIONS



TECHNICAL INFORMATION



PERFORMANCE CURVES

